

While installing LinkTenn32 on a PC with Windows XP with service pack 2, the PC may reboot unexpectedly or 'Blue Screen' if Recovery is not set to 'Automatically Restart'. The 'Blue Screen' will have error information similar to that shown below, but with different memory addresses displayed.

Aksfridge.sys

PAGE_FAULT_IN_NONPAGED_AREA

*** STOP: 0x00000050 (0xF74FCA4D, 0x00000000, 0xA6BF7955, 0x00000000)

*** Aksfridge.sys - Address A6BF7955 base at A6BE8000, DateStamp 45f577e3

The driver file 'Aksfridge.sys' from Aladdin Knowledge Systems is the culprit. Follow the instructions below to remove the incompatible driver.

First, restart the computer.

After it boots up, right-click on "My Computer".

Then go to "Properties". See Figure 1 for reference.

Figure 1 - System Properties Dialog

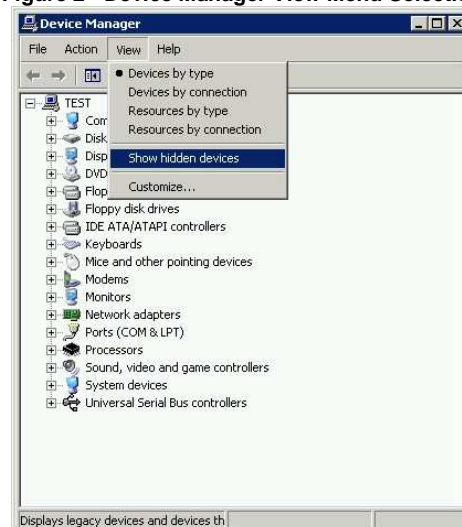


Then go to the "Hardware" tab.

Click on the "Device Manager".

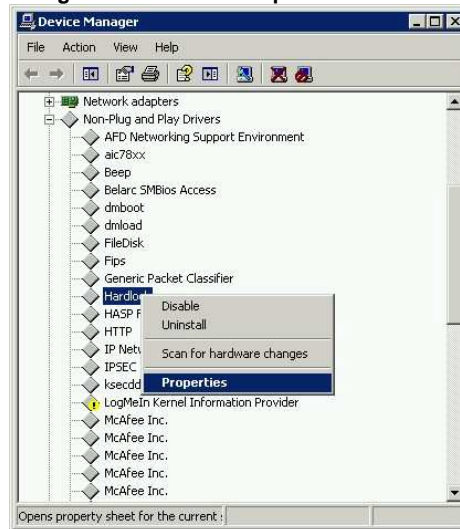
Under the "View" menu, select "Show hidden devices". See Figure 2.

Figure 2 - Device Manager View Menu Selection



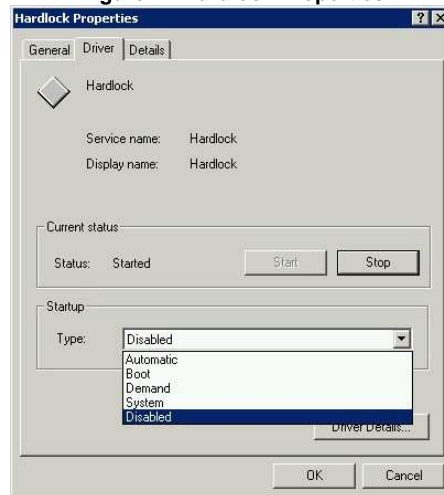
Next, expand the "Non-Plug and Play Drivers" by double-clicking on it. There should be a device called "Hardlock" under the "Non-Plug and Play Drivers", right-click on it, and go to Properties". See Figure 3

Figure 3 - Hardlock Properties Selection



Under the Hardlock Properties, go to the "Driver" tab. Change the startup type to "Disabled". See Figure 4.

Figure 4 - Hardlock Properties



Click "OK".
Restart your computer.
After it boots up, recheck the 'Hardlock' properties and see if it is disabled.

Download the HASP_SRM_driver_cmdline.zip file from site shown below.

ftp://ftp.aladdin.com/pub/hasp/srm/Runtime_%28Drivers%29/HASP_SRM_Runtime_cmd_line.zip

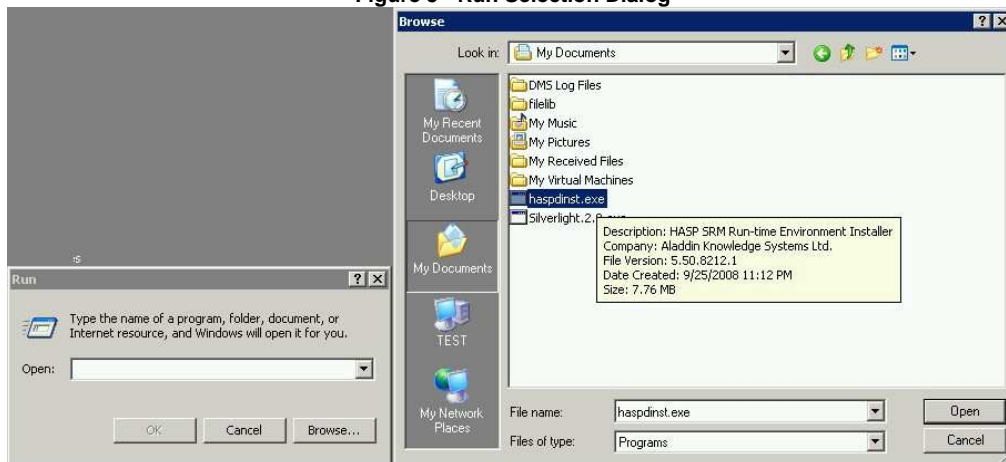
Unzip and extract the haspdinst.exe file to your 'My Documents' folder. Remove the previous version of the HASP Device Driver by doing the following:

Click on Start.

Scroll up to Run.

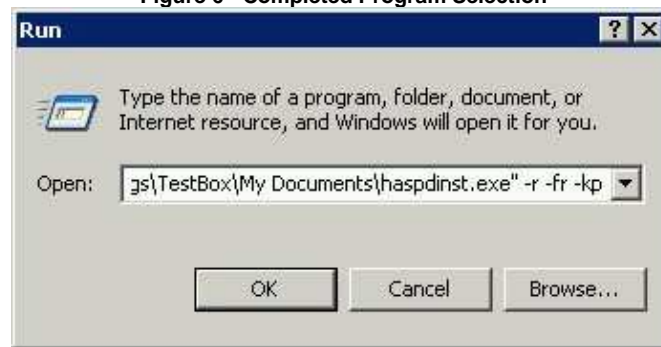
Click on Browse and look for the haspdinst.exe file in your 'My Documents' folder. See Figure 5.

Figure 5 - Run Selection Dialog



At the end of the path, type in '-r -fr -kp'. It should look **something** like Figure 6 below depending on your path to the haspdinst.exe file. See Figure 6 ("C:\Documents and Settings\TestBox\My Documents\haspdinst.exe" -r -fr -kp).

Figure 6 - Completed Program Selection



If you get an error "unexpected setup api error 14..." restart your computer and try the last step again.

If you get a 'Success' message, restart your computer then try to install LinkTenn32 again.

About Tidal Engineering

Headquartered in Randolph, NJ, Tidal Engineering Corporation has been designing and building award winning embedded hardware and software for test and measurement and data acquisition applications since 1992. The company further provides product development services together with engineering support, and is recognized for technical expertise in such areas as Embedded IEEE 488, and turnkey SCADA (Supervisory Control and Data Acquisition) systems. Tidal's products are available exclusively through ADI American Distributors Inc., an ISO-9002 certified distributor of electronic and electromechanical components and assemblies.

Tidal Engineering Corporation

2 Emery Avenue
Randolph, NJ 07869
Tel: 973/328-1181
Fax: 973/328-2302
www.TidalEng.com